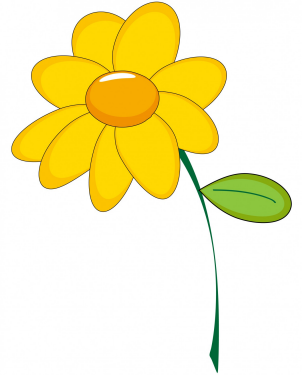


Basic Need of Living Things (Lesson 2)

Essential Question: What are the needs of living things?

Kindergarteners unite to learn about human, animal and plant needs! In lesson 2 of our Basic Needs of Living Things Series, we will investigate the need for food and water. This session will feature live animals and students will have the opportunity to dissect an owl pellet!



NGSS Standards:

- K-LS1-1 Use observations to describe patterns of what plants and animals (including humans) need to survive.
- K-ESS3-1 Use a model to represent the relationship between the needs of different plants or animals (including humans) and the places that they live.

You will need to provide the following for this lesson:

- Paper plates – 1 per student
- Tooth picks – 1 per student – these aren't mandatory – the best tools will be their hands! You can provide them or not.

Greenbush will provide: Owl Pellets (1 per student)

Teacher Preparation Prior to the Lesson:

- Print a copy of the attached bone chart so you have it as a reference to help answer questions your students may have. Or if you prefer to make a copy for each student, that is an option too!
- Gather above materials.
- Prepare plates with owl pellets for each student. (Toothpicks optional)

Lesson Overview: (materials needed)

- Essential Question Discussion (no materials needed)
- Live Animals (no materials needed)
- Owl Pellet Dissection (paper plate with owl pellet/student – toothpick optional)

Program Connection Information

Please use an external microphone (conference style) rather than the integrated one in the computer for the audio for your class and locate it centrally in the room. It can be difficult for the Greenbush teacher to hear the students using the computer microphone and therefore it reduces the interactive nature of the lesson. It is fine to use the computer webcam for your video source.

All classes will take place using Zoom desktop video. If your building is already set up to use a desktop video application with a computer, simply open a browser and enter <https://greenbush.zoom.us/j/2326746414> in the URL space. You may need to download Zoom launcher software (free download) if you don't already have it. This needs to be done in advance of the lesson.

If using a Polycom video conferencing unit (or any legacy type video conferencing unit) to connect to a ZOOM conference, make sure the unit is in "encrypted mode" then dial the following IP on the internet: 162.255.37.11 or 162.255.36.11 and once connected, they will ask for a MEETING ID: enter 232 674 6414 (for Lisa at Science Center).

It's always a good idea to touch base with your district technology facilitator prior to your program to make sure all systems/equipment are in place and operational and that there aren't any firewalls in place that might prevent you from connecting to Zoom.

Once you connect, you will enter a Zoom waiting room. Your Greenbush teacher will admit you into the final meeting room.

If you have questions, please call Lisa Little at Greenbush, 620-724-6281, or email at lisa.little@greenbush.org (best method of contact).



© 2005 Nature Watch
(800) 228-5816
www.nature-watch.com

Owl Pellet Bone Sorting Chart

Use this chart to identify the different types of bones that you discover in your owl pellets.

May be reproduced for classroom use only. Not reproducible for commercial purposes.

	RODENT	MOLE	SHREW	BIRD
Skull				
Jaw				
Shoulder Blade				
Front Leg				
Hip				
Back Leg				
Rib				
Vertebrae				
Misc. Items	Caterpillar larvae & caterpillar cocoons 		Caterpillar droppings 	



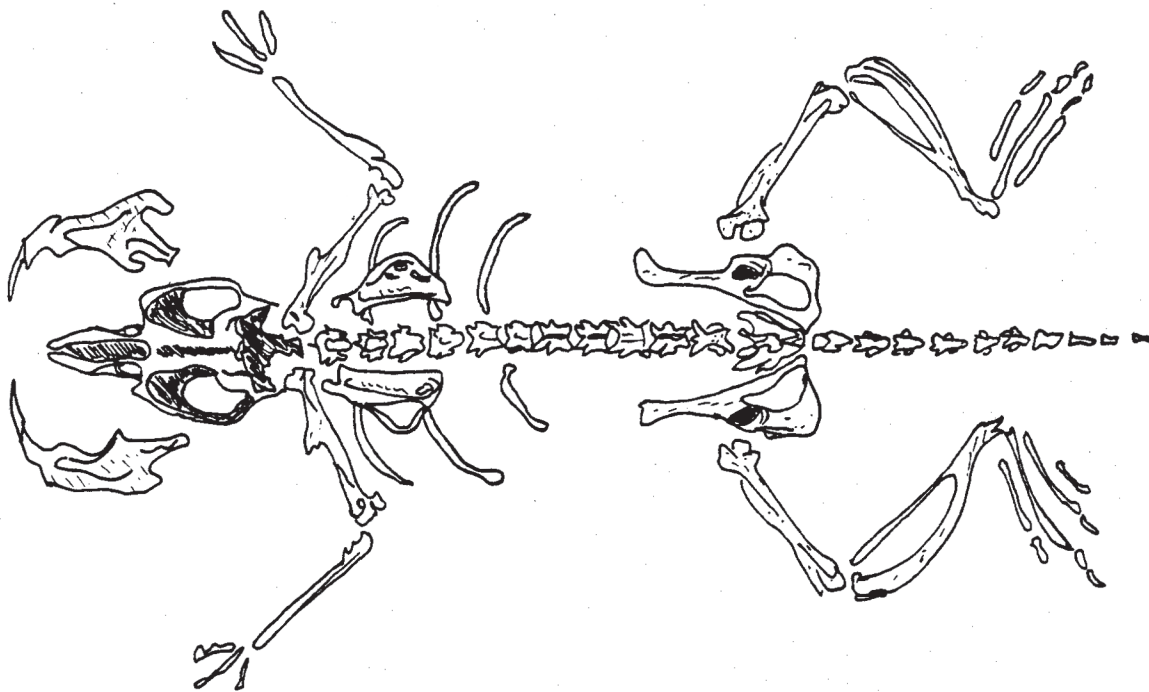
© 2005 Nature Watch
(800) 228-5816
www.nature-watch.com

Owl Pellet Skeleton Diagrams

Use these diagrams to aid in reassembling the bones that you discover in your owl pellets.

May be reproduced for classroom use only. Not reproducible for commercial purposes.

TOP VIEW



SIDE VIEW

